

# QUICK START GUIDE

This Quick Start Guide is designed for first time use. Refer to the instruction Booklet for more information.

## STEP 1 CHARGING THE POLAR BLEND



First connect the motor base onto the Charger base.  
(To lock, align arrows then twist until you hear a click)  
Charge your Polar Blend before initial use for 4-6 hrs.  
A steady blue light on the charger base will indicate a full charge

**NOTE: MUST BE FULLY CHARGED BEFORE USING FOR THE FIRST TIME.**

## STEP 2 ADDING INGREDIENTS



First add liquids ; then add fresh or frozen fruits and/or vegetables. Add some protein powder or booster(optional).  
For best results add ice(optional) after all your other ingredients.

**Note: DO NOT OVERLOAD YOUR CUP. Make sure all your ingredients reach no higher than the MAX LINE.**

## STEP 3 OPENING/CLOSING THE CAP LID

To close the lid, align the back of the lid cover slightly right of the cup spine, turn cap toward the spine and close tightly.

**NOTE: IF LID IS NOT PROPERLY ALIGNED THE BLENDER WILL NOT TURN ON**

Cap lid aligned to the Right of cup spine



Right of cup spine

Cup lid closed properly when directly aligned w/ cup spine



Directly aligned with cup spine

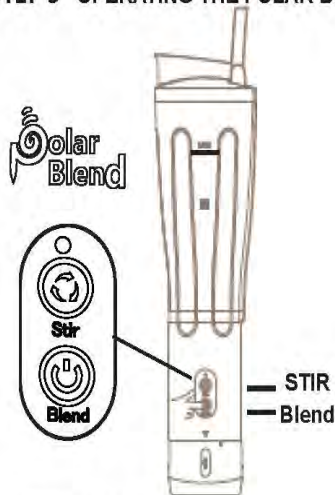
To open the lid, (the Cap lid is leak-proof)  
It might be tight to open on initial use.  
When opening the lid press down and twist to the right to loosen or open

## STEP 4 ADD CUP TO THE MOTOR BASE



Place the cup onto the motor base – ensure it is locked  
(To lock, align arrows then twist until you hear a click )

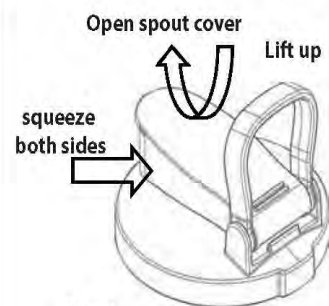
## STEP 5 OPERATING THE POLAR BLEND



Polar Blend has 2 Speeds.  
Lower button for blending(crushing ice)  
Upper button for stirring & mixing (softer ingredients)

The motor will operate only for 20 seconds at a time to avoid overheating. The "STIR" button will flash blue 5 times before you can continue to stir or blend again.

## STEP 6 OPENING THE SPOUT COVER



**Note:**  
To open spout cover:  
It might be tight to open on initial use.  
Squeeze the sides of the spout cover



Lift spout cover to drink or pour

**PLEASE NOTE: NEVER PUT THE MOTOR OR CHARGING BASE IN WATER OR A DISHWASHER; THIS CAN DAMAGE THE UNIT OR CAUSE HAZARD NEVER PUT THE BLENDER CUP OR ANY OTHER PARTS INTO THE MICROWAVE THE BLADES ARE METAL AND CAN CAUSE HAZARD.**

**Polar Blend**

PB-POLAR1-BK

tech support email: support@enegibrands.com

# QUICKTIPS

This Quick Tips Guide is designed for first time use. Refer to the instruction Booklet for more information.

1. Before using frozen fruits or vegetables, let them thaw for a few min or cut them into smaller pcs, add liquid and then blend. This will make the blending more smoother.
2. If the blade gets stuck, tilt or turn the blender upside down and press the "blend" button to start again. then bring it right side up.
3. To clean the cup, you can simply place the cup and lid in the dishwasher.  
Or you can also put soap and warm water, then push the "BLEND" button to clean the unit.

**NEVER PLACE THE MOTOR OR CHARGING BASE IN THE DISHWASHER  
THIS CAN DAMAGE AND CAUSE HAZARD**

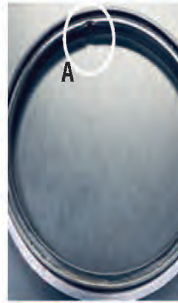
**FOLLOW THESE INSTRUCTIONS TO REPLACE THE LID O RING, OR IF IT BECOMES LOOSE.**



(A) Removable Adapter and (B) Lid cover.



If installing the extra o Ring place it on the outside of the (A) adapter.



Locate the indent On the o ring See image indicated as (A)



Locate the notch On the inside cover lid See image indicated (B)



Align the indent on the (A)adapter to the (B)Cap Lid notch



Locate the three rectangle outline marks on the lid cover. Snap the o ring adapter into place by pressing down above the (C)Rectangular marks on the Cap. Do the same for all three marks. this will lock the adapter in place.

**INCLUDED ACCESSORIES IN THE PACKAGE.**



2x Extra O rings  
Lid cover(bigger o ring)  
Blade adapter(smaller o ring)



Type C cable



Removable Strainer  
already installed in the cup



Manual & Recipe Book



PB-POLAR1-BK

tech support email: support@enegibrands.com